

# Access: Sum Function

---

In Access, the **Sum** function returns the sum of a set of numeric values in a select query.

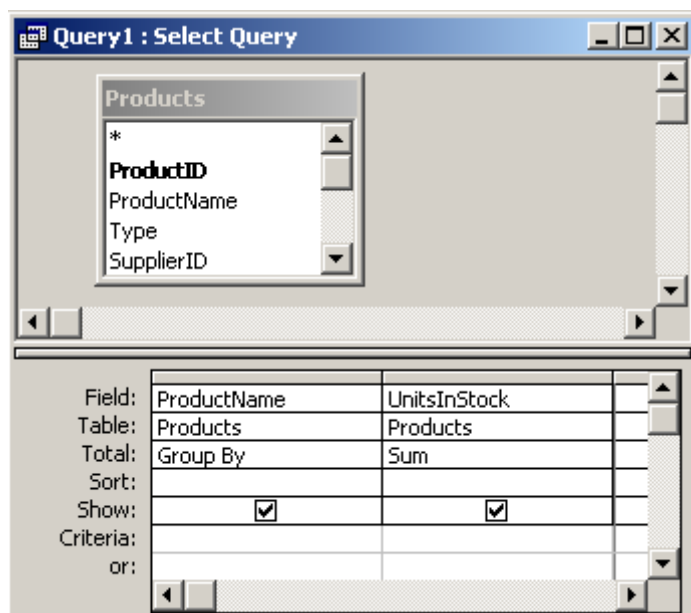
The syntax for the **Sum** function is:

Sum ( expression )

*expression* is a numeric value. It can be a field or a formula that evaluates to a numeric expression.

## SQL/Queries

You can use the **Sum** function in a query by clicking on the Totals button in the toolbar (This is the button with the summation symbol). The **Sum** function is used in conjunction with the **Group By** clause.



This query would return the sum of all UnitsInStock by ProductName.